

buildteam

Lidfield Road Case Study

The 2023 Lookbook Collection



buildteam

Lidfield Road

Case Study

The 2023 Lookbook Collection

CONTENTS PAGE

01 INTRODUCTION

A few words from Build Team

02 PROJECT PROFILE

Overview, outcomes, type of extension, floorplans, before and after shots

03 GALLERY

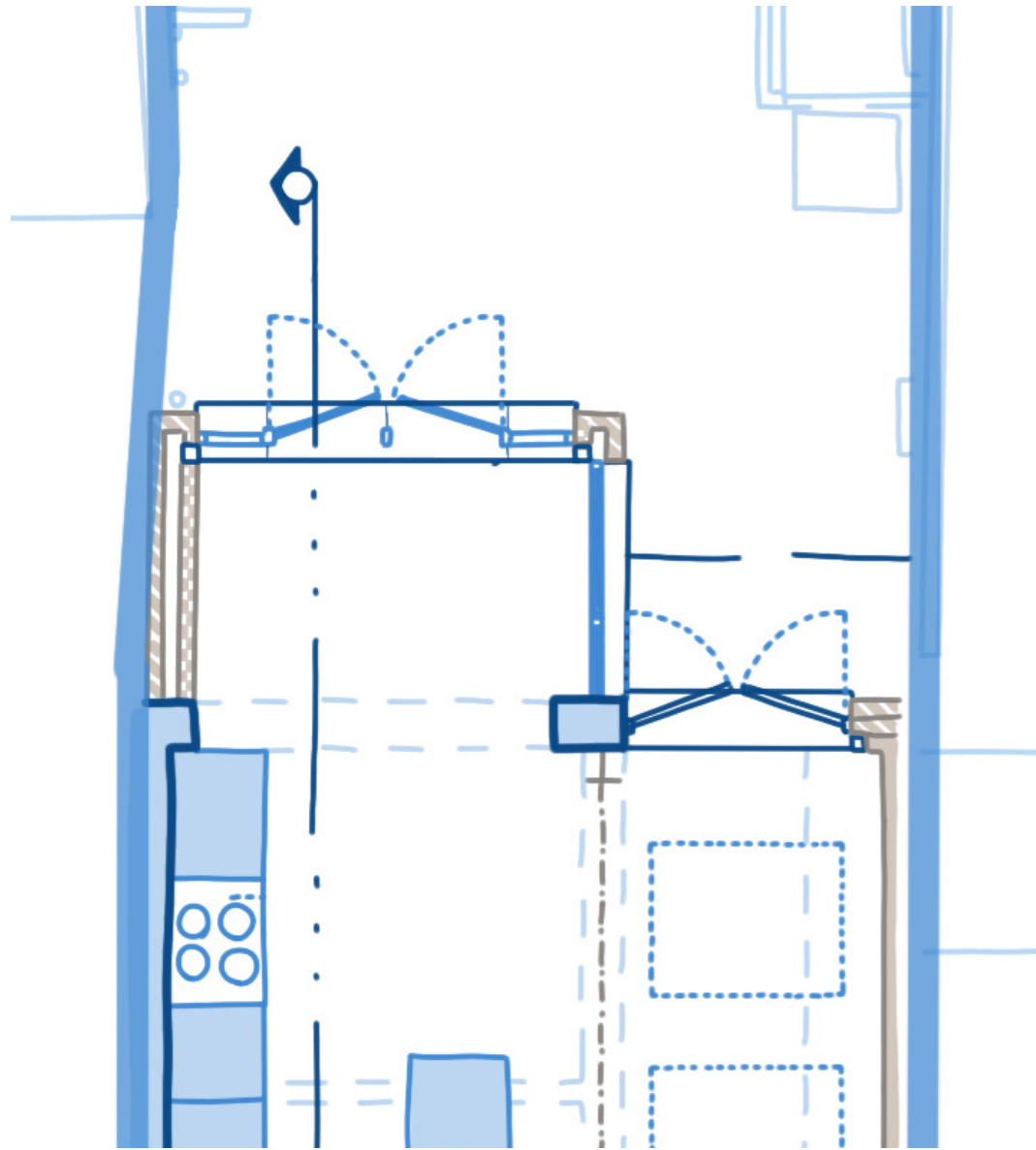
Curated shots from the final extension and breakdown of key features



INTRODUCTION

Build Team's case studies have been created to allow you to delve deeper into, and explore some of, our favourite projects so far. Through the updated 2023 Lookbook Collection, we hope to highlight individual projects and provide informative content for all of our prospective clients.

Each case study presents a curated gallery with floorplans, sketches and images of the design details, alongside project information and the clients' thoughts on their finished home, as well as their experience of working with Build Team.



PROJECT PROFILE

Extension Type: Rear & Side Infill

Size: 35 SQM (extension only)

Duration: 22 Weeks

Budget: £59,000 + VAT

Build Team are proud to present our latest project, a cosy home extension in N16. We took an uninspiring, underused side return and designed a stylish open plan kitchen that's perfectly tailored to the homely eye of this London homeowner.

With stylish french patio doors, open-plan layouts, and a cosy window seat, this is a property with a truly luxurious finish.

Before Build

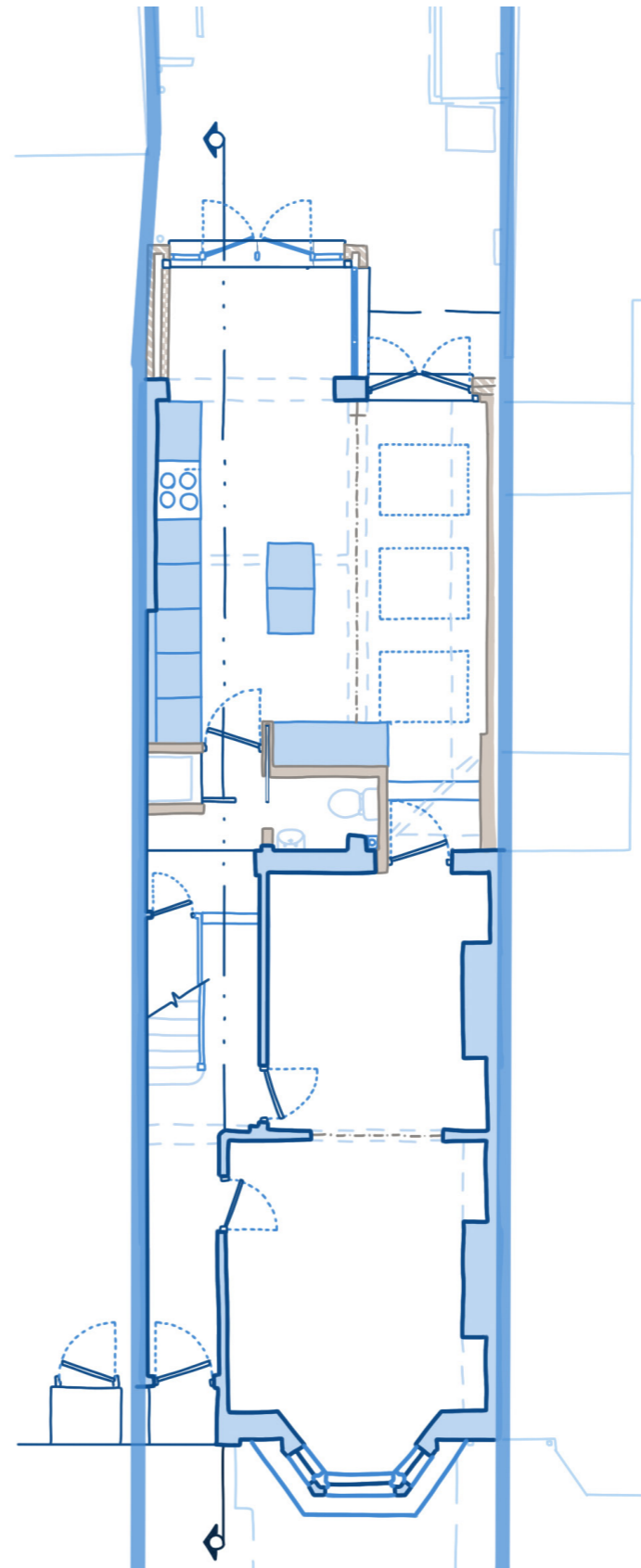


After Build



FLOORPLAN

Ground Floor Rear & Side Infill Extension



GALLERY



KEY FEATURES

01 Window Seat:

A window seat offers a cosy spot for relaxation and serves as an additional seat at the head of the table.

02 Kitchen Island:

A large kitchen island creates extra worktop space and the ability to create a modular setting.

03 Open Shelving:

Open shelving provides a great alternative to wall cupboards and a lovely opportunity for easy display and storage.





04 French Patio Doors:

Wide-opening french doors help to create an open atmosphere and connect indoors to outdoors.

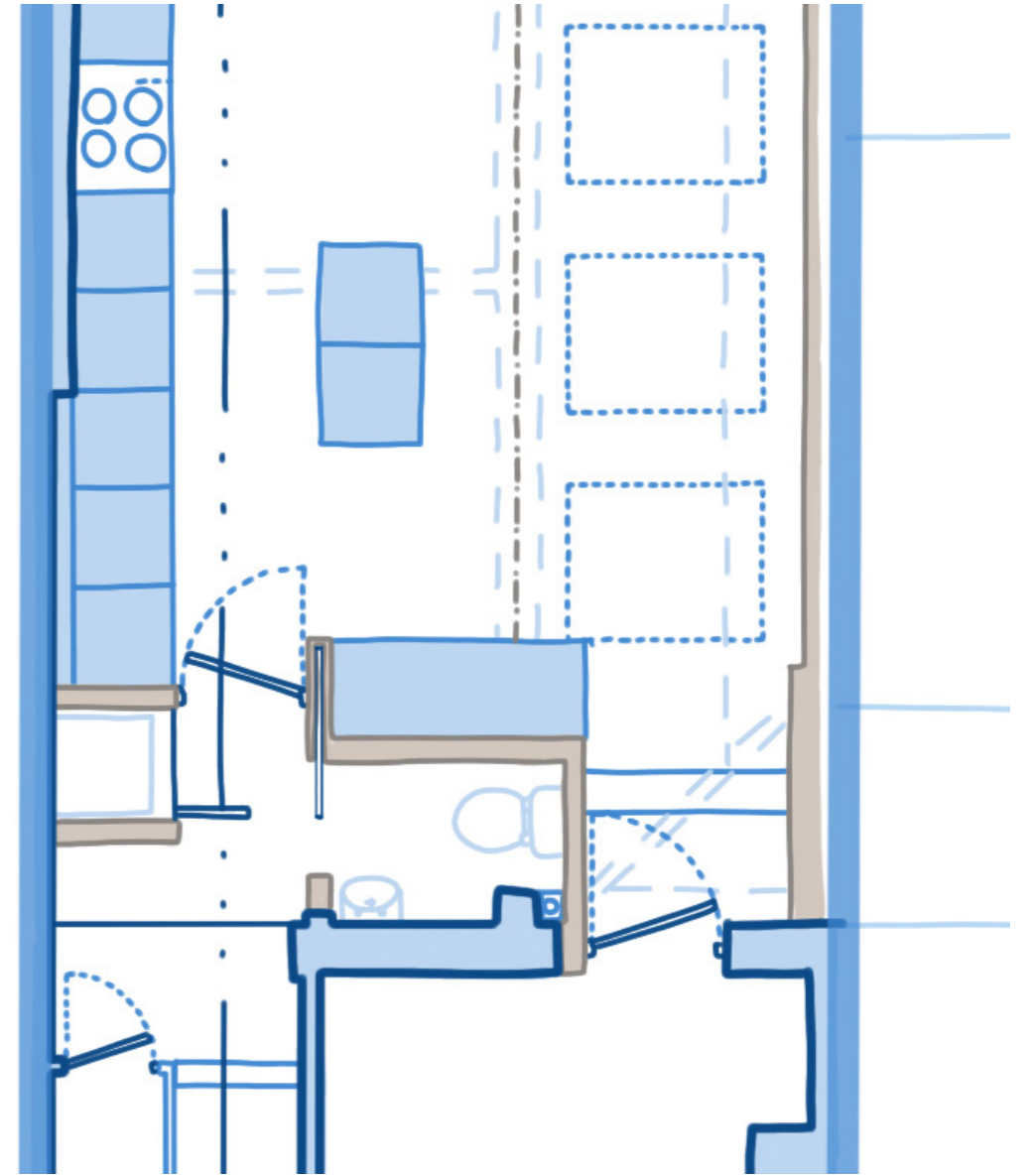
05 Exposed Brick:

Exposed London stock brick helps to add warmth and creates a homely feel.

06 Devol Kitchen:

The softly coloured Sebastian Cox kitchen cabinets give the room a contemporary feel.







@buildteamldn



@BuildTeamLDN

buildteam

Case Studies:

The 2023 Lookbook Collection



@Build Team



@buildteamldn

T: 020 7495 6561

E: hello@buildteam.com