

buildteam

Adelaide Road Case Study

The 2023 Lookbook Collection



buildteam

Adelaide Road Case Study

The 2023 Lookbook Collection

CONTENTS PAGE

01 INTRODUCTION

A few words from Build Team

02 PROJECT PROFILE

Overview, outcomes, type of extension, floorplans, before and after shots

03 GALLERY

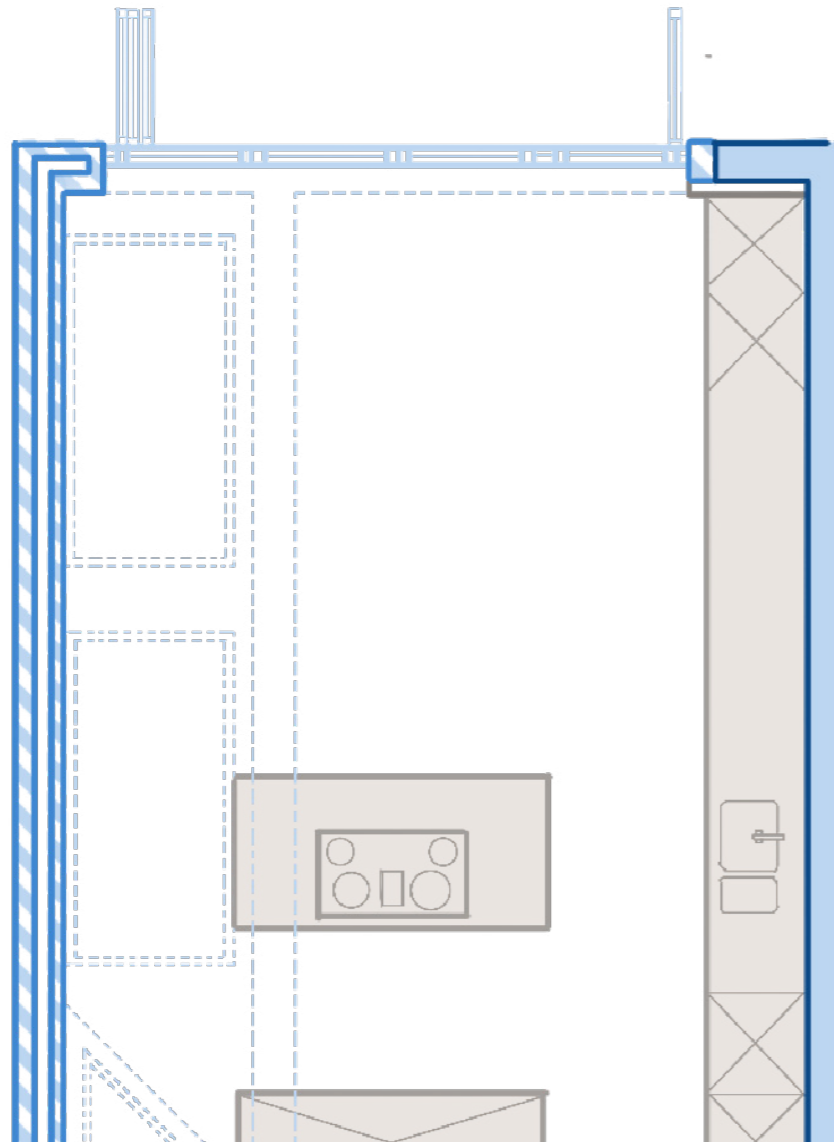
Curated shots from the final extension and breakdown of key features



INTRODUCTION

Build Team's case studies have been created to allow you to delve deeper into, and explore some of, our favourite projects so far. Through the updated 2023 Lookbook Collection, we hope to highlight individual projects and provide informative content for all of our prospective clients.

Each case study presents a curated gallery with floorplans, sketches and images of the design details, alongside project information and the clients' thoughts on their finished home, as well as their experience of working with Build Team.



PROJECT PROFILE

Extension Type: Side Return

Size: 29 SQM (extension only)

Duration: 17 Weeks

Budget: £63,125.00 + VAT

Build Team are proud to present our latest project, a lavish home extension in W13. We took a fixer-upper and turned it into a modern, peaceful haven. The dark, outdated kitchen is now a bright, spacious open-plan area with bifold doors and a stunning skylight that floods in natural light.

With stylish open-plan layouts, and a new WC, this is a property with a truly luxurious finish.

Before Build

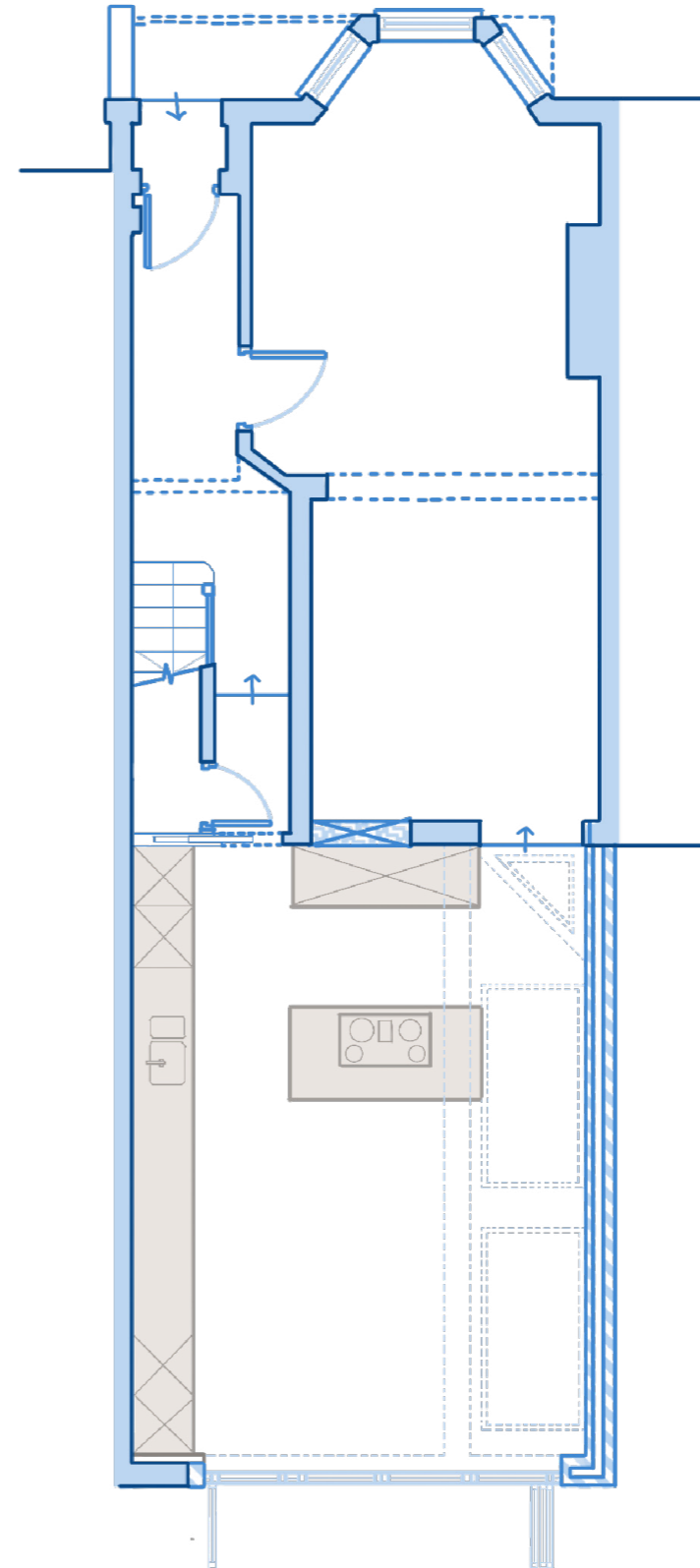


After Build



FLOORPLAN

Ground Floor Side Return Extension



GALLERY



KEY FEATURES

01 Interior Window:

A large interior window allows light to flow from one room to another and connects the kitchen back to the lounge.

02 Kitchen Island:

A large kitchen island creates extra worktop space and place to bring people together.

03 Decorative Slat Wooden Panels:

Slat wall panels help to add character and amp up an otherwise plain wall.





04 Ribbed Glass Pendant:

Stylish pendants help to elevate the space, creating a unique and inviting atmosphere.

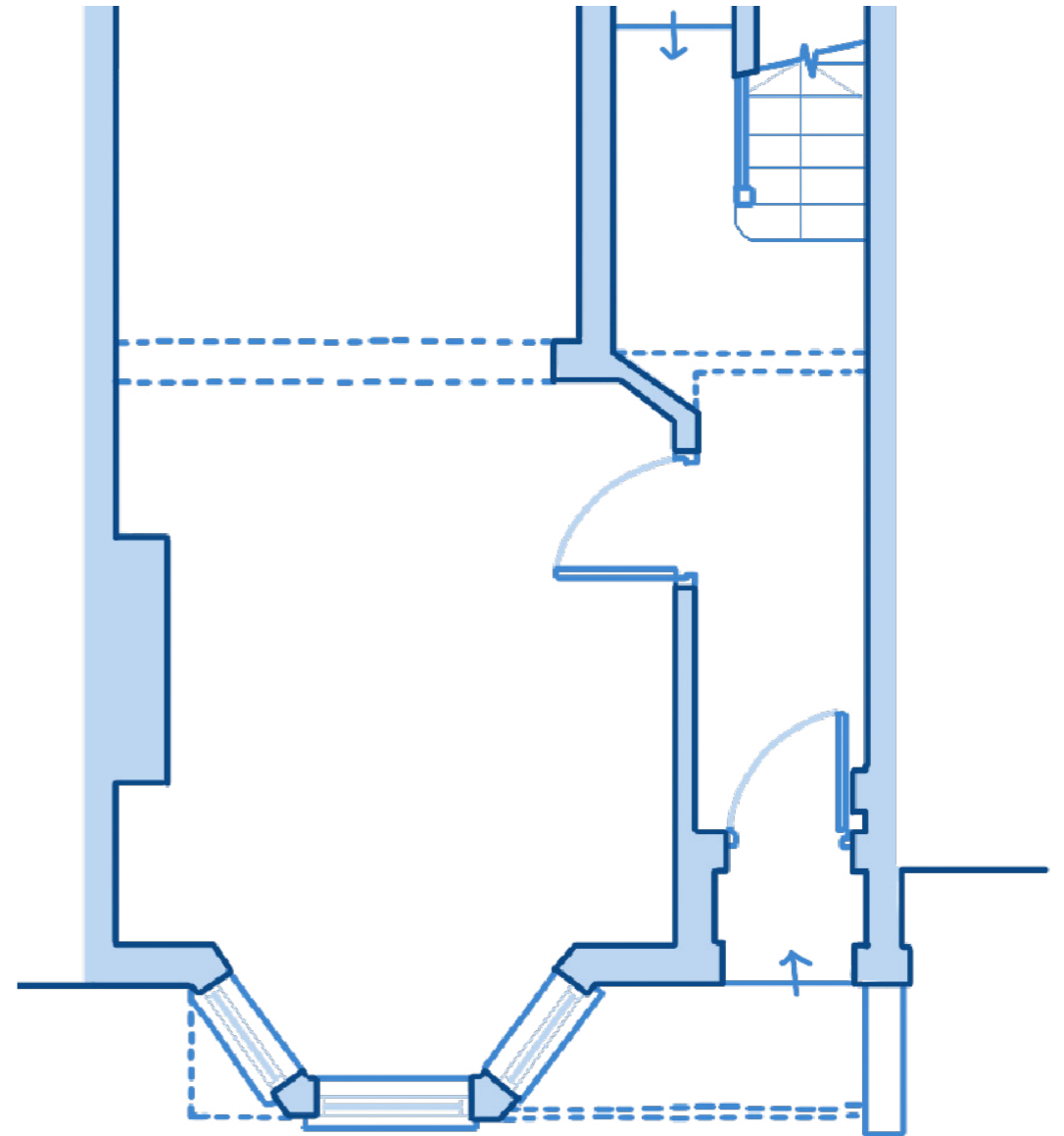
05 Skylights:

Skylights flood the space with natural light and help to frame the sky.

06 Bi-fold Doors:

Space-saving and view enhancing bi-fold doors are a staple of modern living and complete the space.







@buildteamldn



@BuildTeamLDN

buildteam

Case Studies:

The 2023 Lookbook Collection



@Build Team



@buildteamldn

T: 020 7495 6561

E: hello@buildteam.com