

STILL ONLY
£3.65

March 2017 🏡 £3.65

Good Homes

Britain's fastest-growing homes magazine

975 inspiring ways to add spring style

150+
NEW-SEASON
HIGH-STREET
LOOKS

MODERN COUNTRY

Pretty pastels & fresh florals

WIN
THIS
SOFA

8 real homes packed with ideas to steal

BUYER'S GUIDES
Statement taps
Best vacuums
Bathroom buys

34 pages of
Room makeovers

- Decorating with pattern
- Easy projects for all budgets
- Light & bright extensions



EXTENSION 1

'OUR KITCHEN HAS DOUBLED IN SIZE'

Adding to the side of her house has given Becca Archer the large, character-filled and sociable space she wanted

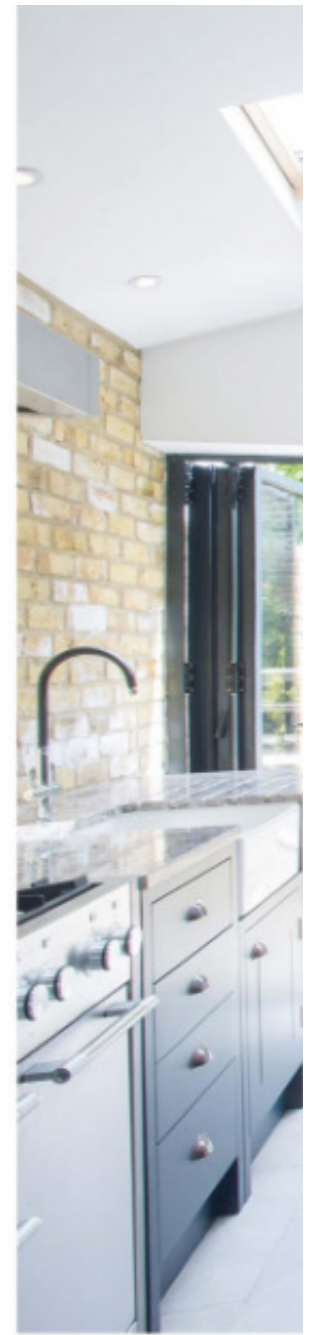


← EASY ACCESS

Two sets of bi-folds ensure the room can be completely opened up to the outside space

→ ISLAND LIFE

A large central unit was high on Becca's wishlist, as it provides a sociable spot for preparing meals or simply chatting with family and friends



EXTENSION DETAILS

HOMEOWNERS

Becca Archer, a civil servant, and her husband Charlie, a management consultant

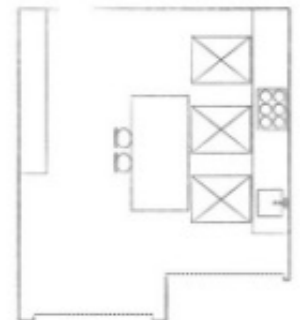
FAMILY Hal, 2

LOCATION

Peckham, London
PROPERTY Five-bedroom, Victorian end-of-terrace

COST OF THE EXTENSION

Design fees	£3,594
Build	£38,016
Bi-fold doors	£4,500
Kitchen	£11,874
Worktops	£3,587
Appliances	£5,089
Flooring	£3,596
Underfloor heating	£2,700
Electrics	£6,984
TOTAL	£79,940



SIZE OF ROOM
L6.5xW6m



STYLING TIP

To maximise the impact of bold colours, contrast dark-painted units with floor tiles in a pale, neutral shade



GOOD IDEA

Position the cooking area underneath roof lights to ensure lots of illumination

PROJECT BRIEF

To extend into the side return to increase the size of the kitchen, creating a sociable space with improved access to the garden

Becca Archer and her husband Charlie weren't even thinking of moving house when they came across their London home on the internet. 'A friend of mine was looking for a new property, and out of curiosity I did an online search to see what sort of thing was available in our area,' she says. 'Once I'd seen the pictures of this house, however, I couldn't wait to take a closer look myself.'

The three-storey Victorian terrace that Becca was so impressed by was in need of renovation, with a kitchen that hadn't been touched since the 1970s and dated plumbing and electrics that needed to be replaced. 'Our electrician nearly had heart failure when he saw the state of all the wiring,' she recalls.

Although it was at least two years earlier than they'd anticipated moving up the property ladder, the Archers could see the potential of the spacious

house and decided it was too good to miss. 'We were the 75th set of people to view it, so we were amazed that our bid was successful,' she says. For the first six weeks after moving in, the couple called in favours from family and friends to help them strip the interior before the essential rewiring work was carried out. They then saved up to give the bathroom and living room a makeover, before the work was put on hold when their son Hal was born.

'However, Charlie came home one day and said he'd had enough of living in a half-finished house, so we decided to remortgage and get the rest done in one go,' says Becca. 'As well as updating all the remaining interiors, we wanted to extend the rear of the property to increase the size of the kitchen and make the house feel more connected to the outside.'

After spotting a nearby extension that was being constructed by Build Team, Charlie looked up the

design and build company online and liked the look of their completed projects. 'It also appealed to us that we could work with its in-house designers to plan the extension and then Build Team would carry out the work,' says Becca. 'The process went very smoothly, and we received regular calls and emails from our project manager with progress reports, which was important to us as we moved out for the last four-and-a-half months of the six-month job.'

By extending into the empty area to the side of the original kitchen, the couple have turned what was a wasted outdoor space into valuable living zone. The kitchen now stretches the full width, with two sets of modern bi-folds opening up to the garden. Three large Velux windows bring light in and the exposed brickwork of the new party wall adds

character. The classic Shaker-style kitchen units from British Standard had been on Becca's wishlist for several years after she spotted them in a magazine. 'I'd always had this style in mind while we were planning the extension,' she says. 'I knew I wanted a dark colour too, as I think it makes it easier to keep the units looking clean.' Supplied in a standard white finish, Build Team hand-painted the cabinetry in basalt by Little Greene. Teaming them with a pale-grey granite worktop and concrete-effect floor tiles has given the kitchen a slightly industrial edge.

'We went through a period of not liking our home,' says Becca, 'but adding the extension has made us fall in love with it all over again. All three rooms on the ground floor now feel connected, and it's great to have this big, sociable space at the back.'

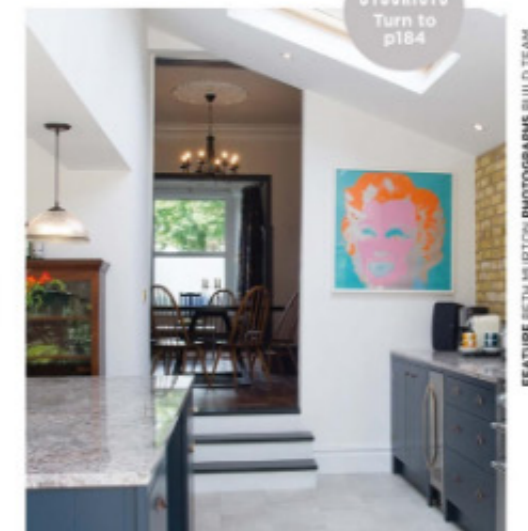
↑ FOCAL POINT
Becca and Charlie have made a feature of the new brick wall by leaving it exposed for an industrial feel

↓ IMPROVED LAYOUT
The more formal dining room now leads through to the kitchen, creating a better link between the two spaces

Shopping list

KITCHEN Shaker units painted in basalt by Little Greene, £7,674 (excluding painting and installation), British Standard. Bianco Antico granite worktop, £3,587, Granite & Marble UK Ltd. Villeroy & Boch Farmhouse ceramic Belfast sink, £204.37, Tapwarehouse.com. Abode linear nero monobloc tap, £225, John Lewis **APPLIANCES** Mercury 1082 dual-fuel range cooker, £3,848; Mercury SC Slab cookerhood, from £1,100, both Twyford Cookers. JLWF303 wine fridge, £386, John Lewis. Bosch Serie 4 SMV53L00GB integrated dishwasher, £399.99, Co-operative Electrical Shop **FLOORING** New York Bronx porcelain floor tiles, £41.96 per sqm, Mandarin Stone **GLAZING** Aluminium bi-fold doors, £4,500, Build Team **LIGHTING** Tristan ceiling light, £60, John Lewis **FURNITURE** Padstow two-door larder in putty, £1,699, Marks & Spencer. Glass-fronted cabinet, £300, Crystal Palace Antiques

STOCKISTS
Turn to
p184



FEATURE: BETH HURTON PHOTOGRAPHS: BUILD TEAM