



KITCHEN MAKEOVER 1

# 'HAVING FAMILY TIME IS EASY'

Henrietta Sitwell loves being able to watch her daughters play while she cooks meals in her spacious new zone

**W**hen Henrietta Sitwell and Dickon Reid's first daughter was born, the couple realised they had outgrown their small galley kitchen. 'I liked the room,' explains Henrietta, 'but there was nowhere safe for Kitty to play while I cooked.'

Wanting extra space and a completely different layout, the couple decided that the best course of action was to build an extension. 'A number of neighbours had done the same thing by incorporating the side return. Ours was just dead space; a dark and cluttered dumping ground for old bikes and barbecues,' she says.

A three-month project followed, undertaken by construction specialist Build Team. The brick shell was built in a few weeks, and the sub floor was excavated to improve the ceiling height. Bi-fold doors were fitted and roof lights installed to bring in natural light.

For the kitchen design, the couple were keen to create a clean look with classic cupboards topped with

← FOCAL POINT

An eye-catching swan-neck mixer tap is incorporated into the design of the kitchen's elegant marble-topped island

↓ TWO OF A KIND

Another butler's sink for washing-up is located below the window. Overhead lighting is provided by a discreet ceramic pendant

STYLING TIP

For a modern take on traditional style, match classic Shaker cabinets with contemporary elements – such as shiny chrome handles and chic metro tiles



## KITCHEN DETAILS

HOMEOWNERS

Henrietta Sitwell, a PR consultant, and husband Dickon Reid, a barrister

AGES Both 41

FAMILY Kitty, 3, and Violet, 1

LOCATION Stockwell, London

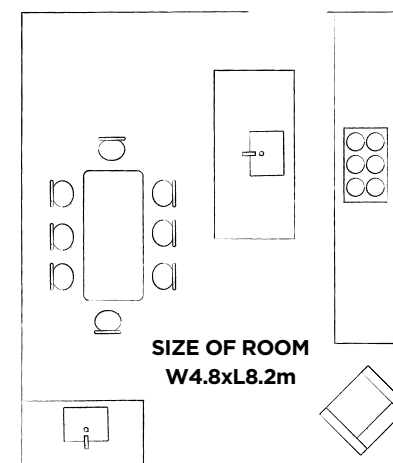
PROPERTY Four-bedroom Victorian terraced house

COST OF NEW KITCHEN

Cabinetry	£16,000
Worktop	£2,850
Appliances	£3,100
Tiling	£6,250
Sinks & taps	£996
Lighting	£179
Paint	£200
Heating	£320
<b>TOTAL</b>	<b>£29,895</b>

→ VIEW THE FLOORPLAN

The kitchen cabinets, with a central island unit, sit to the right of the open-plan space. A small utility area is located in the far-left corner of the room behind the dining zone



WORK CARRIED OUT

To make space for a side-return extension, the original kitchen was stripped back. Bi-fold doors were added to the rear and roof lights installed to ensure the space was naturally bright



*'We designed the kitchen around our 17th century dining table'*

elegant Carrara marble. 'I love the big, handsome drawers and cabinetry,' says Henrietta.

The finished room is bright and airy with timeless appeal. Hand-painted units with polished chrome handles are paired with simple metro tiles and stainless-steel appliances, giving a high-quality finish. A large island unit with a butler's sink and swan-neck tap is a practical and attractive feature that enables Henrietta to chat to guests while she prepares meals.

Simple units and white walls are an effective backdrop for the family's collection of ornaments and inherited artworks. 'We designed the layout of the kitchen ourselves, working around our 17th-century dining table,' explains Henrietta. 'We wanted our books, pictures and antiques to do the talking.'

With its sight lines back into the house and out on to the garden, the extension has transformed the feel of the whole building. 'It was a relief to see the way our design choices worked,' says Henrietta. 'This is now the perfect space for Kitty and Violet to play while I cook.'

**↑ LAID-BACK FEEL**  
Distressed-look chairs, a beautiful antique table and distinctive wall art combine to create a relaxed zone for casual dining

STOCKISTS  
Turn to  
page 165

## SHOPPING LIST

**KITCHEN UNITS** Suffolk Shaker cabinets in dove grey, £650 for a 60cm base unit, Neptune **WORKTOPS** Carrara marble, from £400 per sqm, Granite & Marble UK **APPLIANCES** Oven and microwave, £1,300, Neff **FLOORING** Wychwood limestone, £85 per sqm, Artisans of Devizes **TILES** Retro Metro Marble Arch, £74.98 per sqm, Fired Earth **SINKS & TAPS** Shaker sink 800, £299 each; Phoenician mixer tap with lever handles, £299, all Perrin & Rowe. Tre Mercati Imperial taps in chrome, £99.95 for two, Victorian Plumbing **LIGHTING** Ceramic rise and fall pendant, £179, Holloways of Ludlow **HEATING** Avoca two-column radiator (H60xW104.2cm), £199, Screwfix **PAINT** 57th Street super emulsion, £41.50 per 2.5ltr, Fired Earth. Pointing estate eggshell, £53 per 2.5ltr, Farrow & Ball

## IDEAS TO STEAL

*Blend modern and vintage to achieve Henrietta's stylish space*



### ↑ INCLUDE DISPLAY UNITS

Show off glassware and plates with glazed wall cupboards, which will also make it easy to find essential items



### ↑ ADD COLOUR AND TEXTURE

Create an eclectic tableware mix with retro-style crockery, vintage containers and decorative tiles



### ↑ OPEN UP THE SPACE

Bi-fold doors flood a room with natural light and provide a seamless link between home and garden